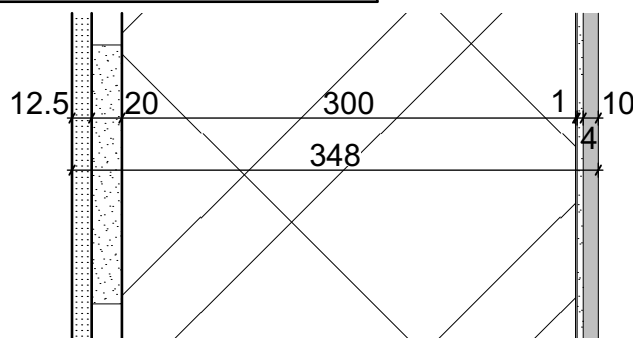


# BATHROOM WALL BW2

SC 1:5



## COMPOSITION OF BATHROOM WALL HELUZ AKU 30

N	FUNCTION	MATERIAL SPECIFICATION	STABILIZATION	THICKNESS
1	PAINT	ONE-COMPONENT, WATER-SOLUBLE PAINT DESIGNED FOR GYPSUM BOARDS internal dispersion paint with organic binders and limestone fillers, water vapour permeability 0.02 m	brush or spraying machine	-
2	FILLER	UNIVERSAL PASTE FILLER bending strength > 320N, fire reaction class A2-s1,d0	stainless steel trowel	-
3	GYPSUM BOARD	GYPSUM BOARD coefficient of thermal conductivity $\lambda_u$ 0.21W/m*K, fire reaction class A2-s1,d0, diffusion resistance factor $\mu$ 6-10, longitudinal expansion factor in case of humidity change $5-8 \cdot 10^{-6}$ , compressive strength 5.0 - 10.0 MPa	mechanically anchored	12.5
4	ADHESIVE BINDER	GYPSUM ADHESIVE BINDER adhesion min. 0.24 MPa, fire reaction class A1, curing time min. 12 hours	stainless steel trowel	20
5	PENETRATION	CONCENTRATED WATERDISPERSION concentrated aqueous dispersions of artificial resins based on acrylic resins with additives, consumption 100g/m <sup>2</sup> , dilution ratio 1:4, curing time circa 24 hours	roller, brush or spraying machine	-
6	LOAD-BEARING	LOAD-BEARING MASONRY BRICK monolayer, load-bearing, heat transfer coefficient U 1.0W/m <sup>2</sup> *K, coefficient of thermal conductivity $\lambda_u$ 0.363W/m*K, fire reaction class A1, fire resistance REI 180 DP1, airborne noise Rw 56, diffusion resistance factor $\mu$ 5/10	-	300
7	PENETRATION	ACRYLIC PRIMER ready to use acrylic based primer, temperature range (+5°C)-(+35°C), minimum drying time 45-60 minutes, pot life 20 minutes, consumption 150 gr/m <sup>2</sup> , 2 layers needed	roller, brush or spraying machine	-
8	WATERPROOFING	ACRYLIC EMULSION BASED, ONE COMPONENT ELASTIC WATERPROOFING curing time 4 hours, consumption 1.5 kg/m <sup>2</sup> , 3 layers, tensile strength $\geq 0.8$ N/mm <sup>2</sup> , tensile adhesion strength $\geq 0.8$ N/mm <sup>2</sup> , water-vapour permeability class I, equivalent air thickness $S_d < 5$	brush or roller	1.0
9	TILE ADHESIVE	CEMENTITIOUS ADHESIVE WITH EXTENDED OPEN TIME AND REDUCED SLIP curing time 24 hours, consumption 3-5 kg/m <sup>2</sup> , 4 mm in case of 30x30cm tiles, tensile adhesion strength $\geq 1.0$ N/mm <sup>2</sup> , fire reaction class A1, slip >0.5 N/mm <sup>2</sup>	stainless steel trowel	4.0
10	SURFACE FINISH	CERAMIC TILES dimensions 30 x 30 cm, coefficient of thermal conductivity $\lambda_u$ 1.01W/m*K, diffusion resistance factor $\mu > 0.5$ , anti-slip R11	-	10
11	GROUTING MORTAR	FLEXIBLE GROUTING MORTAR curing time 24 hours, flexural strength $\geq 2.5$ N/mm <sup>2</sup> , compressive strength $\geq 15$ N/mm <sup>2</sup>	rubber trowel	-

NOTES:

- 4 distance of mortar targets 30 - 35 cm
- 5, 7 painted on clean, flat (maximal deviation 30 mm), dry, degreased surface in temperatures higher than 5 degrees
- 9 corners have to be treated by butyl tape, width 100 mm before placing of the adhesive